



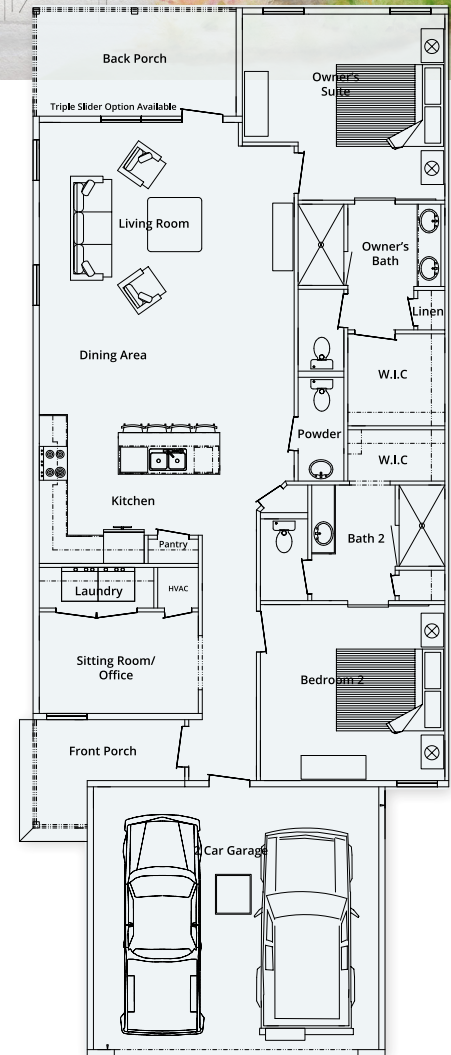
## BREZZA

1,555 Sq Ft

2 Bedrooms | 2.5 Bathrooms

Light, bright and oh-so-livable, the Brezza is all about convenience and practicality. Dual owner's suites are the ideal way to accommodate sleeping habits and decorating styles. It's also a gracious way to offer guests maximum privacy and comfort. The star of the show is the wide-open kitchen/dining/living room, with a triple slide option.

- Attached two-car garage
- Private rear patio, with screened-in option
- Multi-function den or office
- Top Whirlpool appliances
- Granite in kitchen with quartz option
- Tech-friendly buried fiber optic cable
- Drought-resistant, native landscaping and nature views



FROM THE LOW \$300s

ArazzoLiving.com | 850.446.5810

Situated at the corner of Madison & Garrison



Information is believed accurate, but not warranted and is subject to changes, omissions, errors, prior sales and withdrawal without notice.